



OPEN ACCESS

EDITED BY
Pathology and Oncology Research
Editorial Office,
Frontiers Media SA, Switzerland

*CORRESPONDENCE
Dániel Deme,
✉ danieldeme_md@gmail.com

RECEIVED 05 June 2024
ACCEPTED 12 June 2024
PUBLISHED 08 July 2024

CITATION
Deme D, Tamaskovics BF, Jammoul N,
Kovács S, Kayode KO, Grice JW and
Telekes A (2024), Corrigendum:
Association between pathological
characteristics and recurrence score by
OncotypeDX in resected T1-3 and N0-1
breast cancer: a real-life experience of a
North Hungarian regional center.
Pathol. Oncol. Res. 30:1611862.
doi: 10.3389/pore.2024.1611862

COPYRIGHT
© 2024 Deme, Tamaskovics, Jammoul,
Kovács, Kayode, Grice and Telekes. This
is an open-access article distributed
under the terms of the Creative
Commons Attribution License (CC BY).
The use, distribution or reproduction in
other forums is permitted, provided the
original author(s) and the copyright
owner(s) are credited and that the
original publication in this journal is
cited, in accordance with accepted
academic practice. No use, distribution
or reproduction is permitted which does
not comply with these terms.

Corrigendum: Association between pathological characteristics and recurrence score by OncotypeDX in resected T1-3 and N0-1 breast cancer: a real-life experience of a North Hungarian regional center

Dániel Deme^{1*}, Bálint Ferenc Tamaskovics^{1,2,3}, Nizar Jammoul⁴,
Sándor Kovács⁵, Kmmmanuel Oladunjoye Kayode¹,
James W. Grice⁶ and András Telekes¹

¹Department of Clinical Oncology, Center of Radiotherapy and Oncology, Nógrád Vármegyei Szent Lázár Hospital, Salgótarján, Hungary, ²Department of Radiation Oncology, Medical Faculty and University Hospital Düsseldorf, Henrich Heine University, Düsseldorf, Germany, ³Center of Integrated Oncology Aachen Bonn Cologne Düsseldorf (CIO ABCD), Aachen, Germany, ⁴Department of Pathology, Center of Radiotherapy and Oncology, Nógrád Vármegyei Szent Lázár Hospital, Salgótarján, Hungary, ⁵Department of Economical and Financial Mathematics, University of Debrecen, Debrecen, Hungary, ⁶Department of Psychology, Oklahoma State University, Stillwater, OK, United States

KEYWORDS

breast cancer, pathological characteristics, OncotypeDX, recurrence score, observation oriented modeling

A Corrigendum on
Association between pathological characteristics and recurrence score
by OncotypeDX in resected T1-3 and N0-1 breast cancer: a real-life
experience of a North Hungarian regional center

by Deme D, Tamaskovics BF, Jammoul N, Kovács S, Kayode EO, Grice JW and Telekes A (2024).
Pathol. Oncol. Res. 30:1611735. doi: 10.3389/pore.2024.1611735

In the published article, there was an error for Figure 1 as published. The correct Figure 1A corresponds to the image of Figure 4B as published, and the correct Figure 1B corresponds to the image of Figure 4A as published.

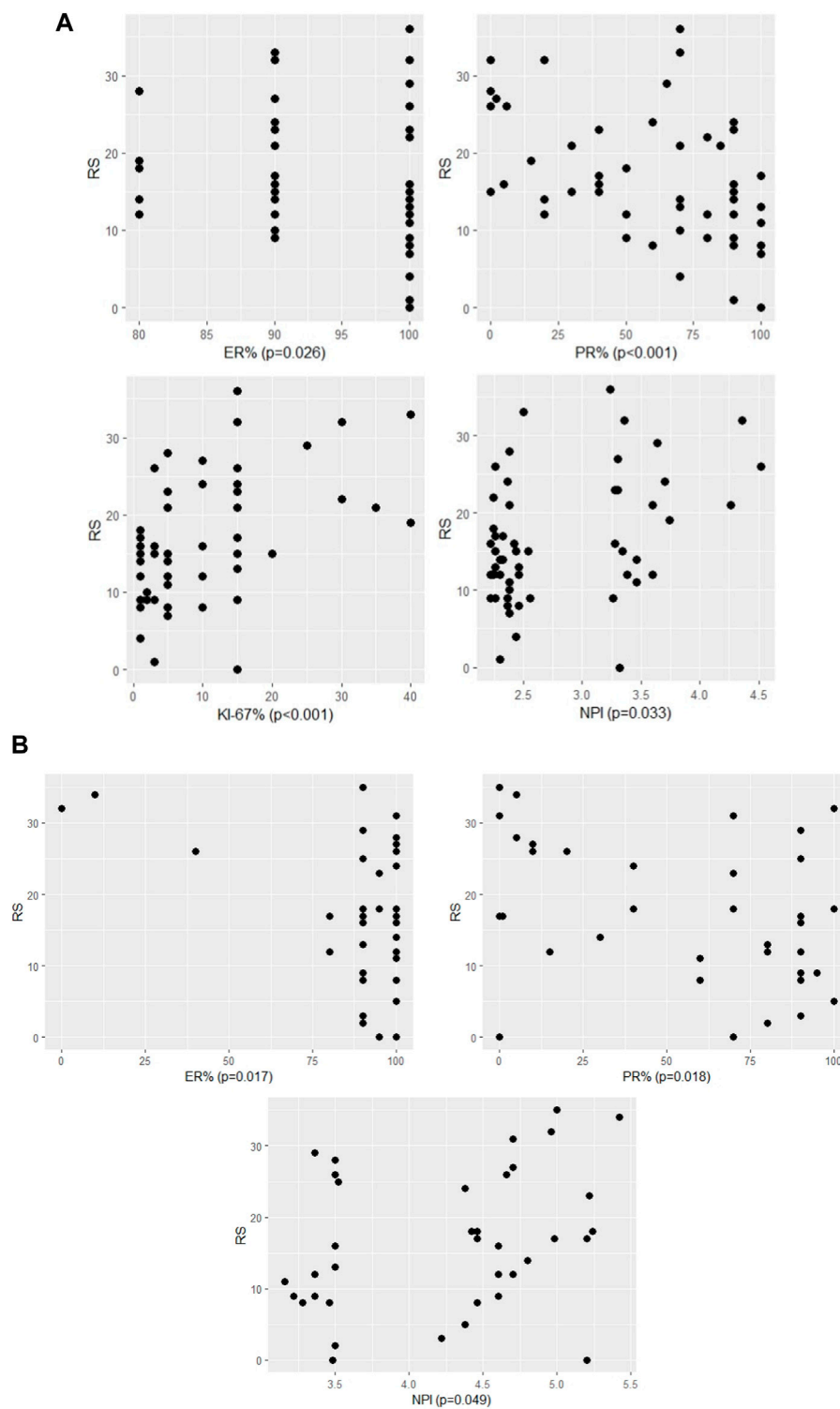
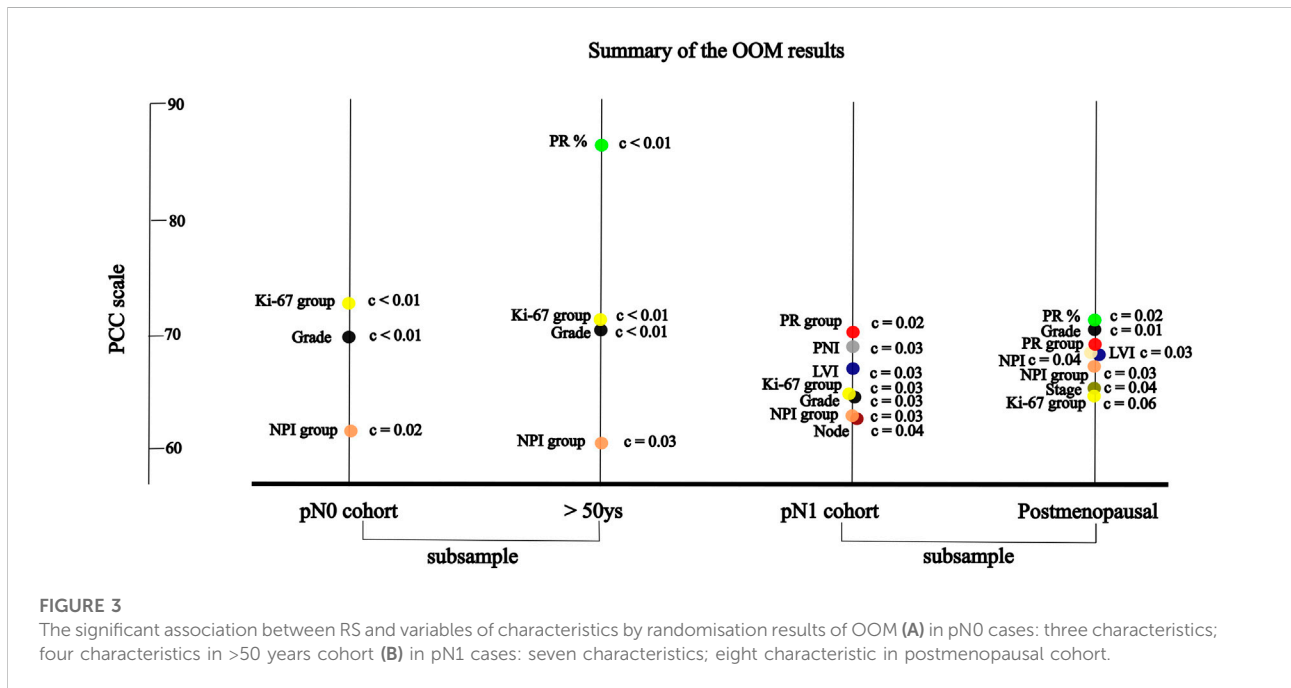
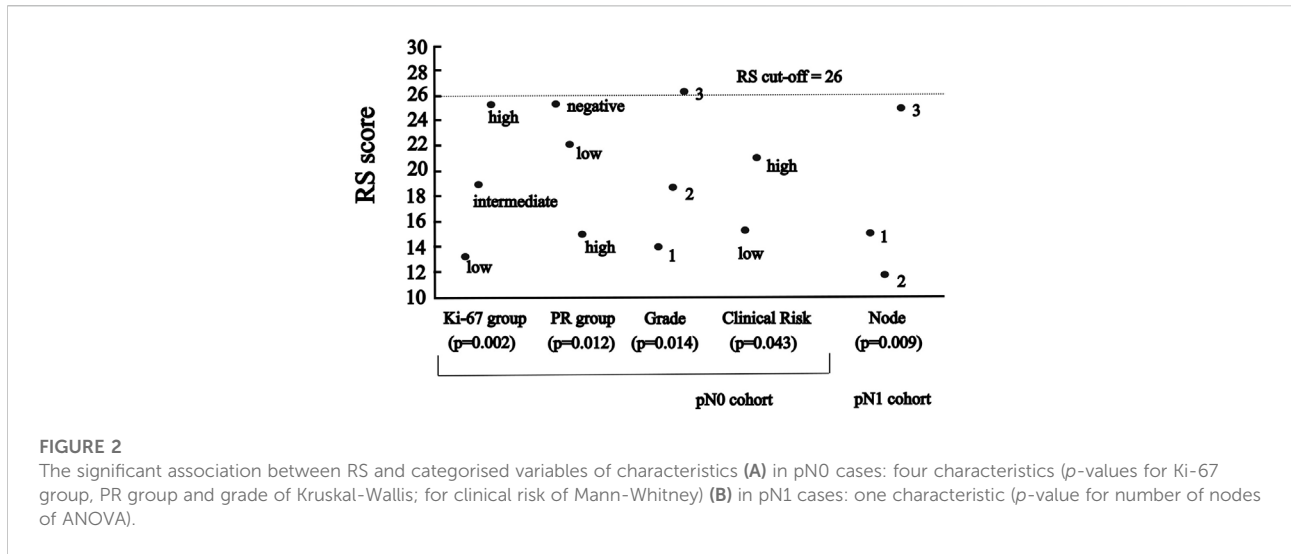


FIGURE 1

The significant association between RS and continuous variables of characteristics (A) in pN0 cases: four characteristics (p -values of Spearman correlation) (B) in pN1 cases: three characteristics (p -values of Pearson correlation).



In the published article, there was an error for Figure 4 as published. The correct Figure 4A corresponds to the image of Figure 1B as published, and the correct Figure 4B corresponds to the image of Figure 1A as published.

In the published article, there was an error for Figure 2 as published. The correct Figure 2 corresponds to the image of Figure 3 as published.

In the published article, there was an error for Figure 3 as published. The correct Figure 3 corresponds to the image of Figure 2 as published.

All captions for Figures 1, 2, 3 and 4 are correct as first published.

This does not change the scientific conclusions of the article in any way. The original article has been updated.

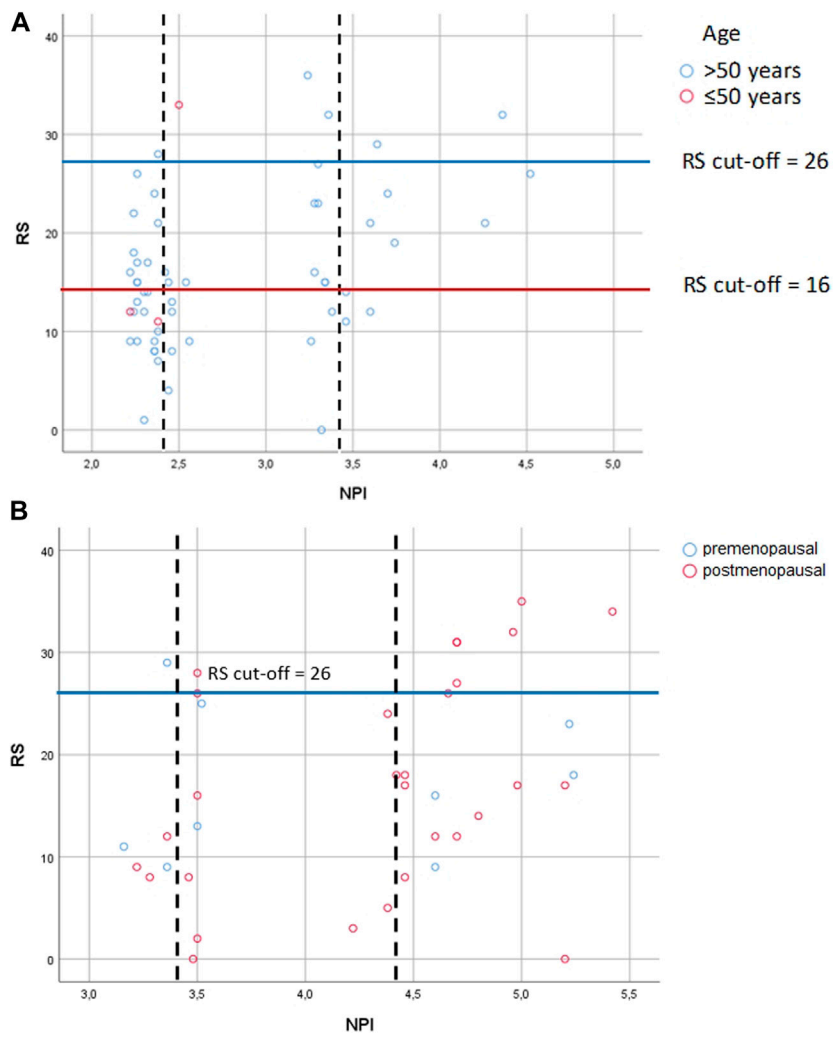


FIGURE 4

Correlation between RS and NPI risk groups **(A)** in pN0 cases: Spearman $\rho = 0.286$ ($p = 0.033$); dashed lines: thresholds for NPI between the excellent (≤ 2.4) and the good (>2.4 and ≤ 3.4) and the moderate (>3.4) groups; correlation between NPI score and RS for patients with the excellent group [Spearman $\rho = -0.151$ ($p = 0.435$)]; correlation between NPI score and RS with the good group [Spearman $\rho = 0.159$ ($p = 0.541$)]; correlation between NPI score and RS with the moderate groups [Spearman $\rho = 0.719$ ($p = 0.019$)] **(B)** in pN1 cases: Pearson correlation $r = 0.322$ ($p = 0.049$); dashed lines: thresholds for NPI between the good (>2.4 and ≤ 3.4) and the moderate I (>3.4 and ≤ 4.4); the moderate I (>3.4 and ≤ 4.4) and the moderate II (>4.4) groups; correlation between NPI score and RS for patients with the good group [Pearson $r = 0.399$ ($p = 0.434$)]; correlation between NPI score and RS for patients with the moderate I group [Pearson $r = 0.025$ ($p = 0.945$)]; correlation between NPI score and RS for patients with the moderate II group [Pearson $r = 0.294$ ($p = 0.185$)] RS = recurrence score generated through OncotypeDX testing; RS cutoff: for pN0 >50 years high RS ≥ 26 , and ≤ 50 years high RS ≥ 16 , for pN1 pre- and postmenopausal high RS ≥ 26 ; NPI = Nottingham Prognostic Index.