

## ARTICLE

## Analysis of the Expressed Immunoglobulin Variable Region Heavy Chain Gene Products in Paraproteins from Iranian Patients with Multiple Myeloma

Soheila GHARAGOZLOO,<sup>1</sup> Ramazan A SHARIFIAN,<sup>2</sup> Rizgar A MAGEED,<sup>3</sup> Fazel SHOKRI<sup>1</sup>

<sup>1</sup>Department of Immunology, School of Public Health and <sup>2</sup>Clinic of Hematology and Oncology, School of Medicine, Tehran University of Medical Sciences, Tehran, I.R. Iran; <sup>3</sup>Kennedy Institute of Rheumatology, London, United Kingdom

The frequency of expression of immunoglobulin (Ig) variable region heavy ( $V_H$ ) chain gene products was studied in 43 Iranian patients with multiple myeloma (MM). The expressed  $V_H$  gene families and associated cross-reactive idiotypes (CRI) were analysed by immunoblotting and ELISA, using peptide-induced polyclonal antibodies specific for  $V_H1$ - $V_H6$  gene families and monoclonal antibodies (MAb) recognising CRI linked to the  $V_H1$ ,  $V_H3$ ,  $V_H4$  and  $V_H6$  gene families. The results revealed that the  $V_H3$  family (60.5%) was the most predominant gene

family. In contrast, no paraproteins were encoded by genes from the  $V_H2$  gene family and only 2.3% were encoded by the  $V_H5$  family. The panel of paraproteins tested rarely expressed the probed  $V_H$ -associated CRI. Our results suggest that: 1-The Ig  $V_H$  genes, may not be randomly expressed in the malignant plasma cells from Iranian patients with MM. 2- Some of the genes seem to be negatively selected or highly mutated, as evidenced by the lack of expression of the probed CRI. (Pathology Oncology Research Vol 6, No 3, 185-190, 2000)

**Keywords:** multiple myeloma,  $V_H$  genes, paraprotein, cross-reactive idiomotype

### Introduction

Multiple myeloma (MM) is a chronic lymphoid malignancy characterized by massive infiltration of the bone marrow by terminally differentiated malignant B-cells leading to progressive bone lesions. Although etiology of the disease is currently obscure, a variety of genetic defects have recently been found to be associated with MM.<sup>1</sup> Activating mutations within the proto-oncogene *ras* and inactivating mutations within the tumor suppressor gene *p53* and retinoblastoma (*Rb*) have been reported by different investigators, accounting for approximately 39% and 50% of the MM cases studied, respectively.<sup>2,3</sup> Altered expression of the *pax-5* gene, which is involved in regulation of B-cell development, and in CD19 expression,

which is a key member of the B-cell receptor signal transduction complex have also been observed in MM cells.<sup>4,5</sup> Different patterns of structural and numeric chromosomal abnormalities have been observed in myeloma cells isolated from MM patients.<sup>6</sup> Using new molecular techniques, it was recently found that translocations involving chromosome 14 on which the Ig heavy chain genes are located, occur in almost all MM cases.<sup>7,8</sup> These complex genetic defects, and the fact that malignant cells are derived from germinal center cells subsequent to antigen challenge<sup>1,9,10,11</sup> may influence selection and expression of the immunoglobulin (Ig) variable region heavy ( $V_H$ ) or light ( $V_L$ ) chain genes by the malignant plasma cells. Due to the clonal origin of the myeloma cells and their potency to produce and secrete a large amount of monoclonal Ig in serum, analysis of the expressed Ig  $V_H$  or  $V_L$  genes can be easily performed on protein or DNA/RNA levels, using specific antibodies or nucleotide probes and primers. Nucleotide or amino acid mutations within the variable region can also be studied directly or indirectly by the same techniques. Molecular approaches have been

Received: Dec 29, 1999; revised: May 5, 2000; accepted: June 5, 2000;

Correspondence: Dr. Fazel SHOKRI, Department of Immunology, School of Public Health, Tehran University of Medical Sciences, Tehran 14155, I.R. IRAN; Fax: 021 6462267)

employed in limited number of MM patients from different ethnic groups with inconclusive results.<sup>9-13</sup> In this study, the expressed  $V_H$  gene products were investigated in paraproteins isolated from Iranian MM patients, using polyclonal and monoclonal antibodies recognizing  $V_H$  subgroups and associated cross-reactive idiotypes (CRI).

## Materials and Methods

### Polyclonal and monoclonal antibodies

A panel of peptide-induced anti-subgroup antibodies ( $V_H1$  to  $V_H6$ ) generated by immunization with subgroup specific peptides was kindly provided by Dr. G. Silverman.<sup>14</sup>

The production and characterization of anti-CRI MAbs employed in this study have been described in detail elsewhere.<sup>15-18</sup> These antibodies are listed in **table 1**. Monoclonal anti-heavy and light chain isotypes and subclasses antibodies, AF6 (IgM), 8a4 (IgG), 2D7 (IgA), JA11 (IgD), C4 ( $\lambda$ ), 6e1 ( $\lambda$ ), JL512 (IgG1), Gom2 (IgG2), ZG4 (IgG3) and RJ4 (IgG4), were kindly provided by Dr. M. Goodall (Dept. of Immunology, University of Birmingham, UK).

### Clinical samples

Serum samples were isolated from 15 ml non-heparinized peripheral blood from 43 Iranian MM patients (22 males, 21 females, mean age 53 years). Diagnosis of MM was based on clinical criteria as outlined elsewhere.<sup>19</sup>

### Protein purification

Paraproteins were purified from serum by a combination of gel chromatography, ion exchange and affinity chromatography. Ion exchange chromatography was performed using DEAE-cellulose (DE-52, Whatmann, England) equilibrated with 0.01 M phosphate buffer PH 7.2. IgG paraproteins were usually eluted as breakthrough fractions with the equilibration buffer. IgA paraprotein purification was accomplished by ammonium sulfate precipitation followed by ion exchange chromatography. IgA was

eluted with 0.02M–0.05 M phosphate buffer. The purified samples were mostly contaminated with a small proportion of normal polyclonal Igs, transferrin and albumin. Contaminating polyclonal Igs were mostly removed by affinity chromatography on Sepharose 4B-protein-A column (Sigma, UK) equilibrated with 0.1 M Tris-HCl buffer (PH 8.0). Further enrichment of IgA was achieved by passage over a column of Sephadex G-100. Purity of the isolated preparations was determined by SDS-PAGE, under denaturing conditions in 10% polyacrylamide gel as described elsewhere.<sup>20</sup>

### Zone electrophoresis, Immunoelectrophoresis (IEP) and Immunofixation (IF)

The procedure has been described elsewhere.<sup>20</sup> Sera were electrophoresed on cellulose acetate (Helena, France) in barbital buffer (0.03 M, PH 8.6) for 30 minutes. For IEP and IF, sera were first separated by electrophoresis on 1% agarose gel (L-Agarose, Behring, Germany) in barbital buffer (0.03 M, PH 8.6). Monospecific polyclonal anti-isotype antibodies (Dakopatts, Denmark) were then added to the troughs (IEP) or were directly applied to the separated bands (IF). Following incubation and several washings, the gel was stained with amidoblack (Merck, Germany) and finally destained.

### Determination of immunoglobulin $V_H$ subgroups

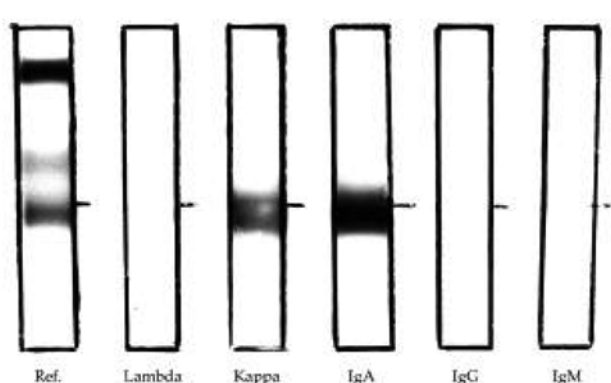
Heavy chain variable region subgroups were determined by immunoblotting using rabbit antisera directed against synthetic peptides, corresponding to consensus first framework sequences.<sup>14</sup> The technique has been described in detail elsewhere.<sup>20</sup> Briefly, approximately 5  $\mu$ g of the purified paraproteins or diluted serum in disruption buffer (Tris-HCl 0.2 M, PH 7 containing 20% SDS, 1% bromophenol blue and 6% sucrose) were loaded on to a 10% polyacrylamide slab gel. Electrophoresed paraproteins were transferred on to nitrocellulose membrane (Schleicher & Schuell, Germany) in transfer buffer (Tris-Glycin, PH 8.3) at 60 mA, overnight. The membrane was then blocked with 2% bovine serum albumin and incubated with appropriate dilutions of polyclonal anti-subgroup antibodies for 2 hours at room temperature. Following extensive washes with PBS, bound proteins were revealed with horseradish peroxidase-conjugated goat anti-rabbit (Dakopatts, Denmark) and finally visualized with diaminobenzidine tetrahydrochloride (DAB) (Sigma) substrate.

### Detection of cross-reactive idiotypes (CRI)

A capture ELISA was employed for determination of the CRI as previously described.<sup>21</sup> Briefly, microtiter polystyrene plates (Maxisorp, Nunc, Denmark) precoated with

**Table 1. Monoclonal anti-CRI antibodies employed in this study**

Antibody	Specificity	Frequency in normal B cells	Reference
G6	$V_H1$ -associated	1.7	15
G8	$V_H1$ -associated	3.2	15
D12	$V_H3$ -associated	19.5	15
Lc1	$V_H4$ -associated	5.7	16
9G4	$V_H4$ -associated	6.9	17
JE6	$V_H6$ -associated	0.1	18



**Figure 1.** Immunofixation pattern of a serum sample from one of MM patients.

2.5–10 µg/ml of monoclonal anti-CRI antibodies were incubated with appropriate concentrations of the purified paraproteins. Following addition of isotype specific HRP-conjugated goat anti-human Ig (Dakopatts), the reaction was revealed with o-phenylenediamine dihydrochloride (OPD) (Sigma) substrate.

## Results

### Detection and isotypic characterization of the paraproteins

Paraprotein was detected as a sharp band in the serum electrophoresis pattern of all samples tested (43/43). Isotype and subclass of paraproteins were determined by IEP and/or IF and ELISA techniques. Typical results obtained by IF is illustrated in *Figure 1*.

Of all samples tested, 70% (30/43) and 30% (13/43) belonged to IgG and IgA isotypes, respectively. The frequency of IgG and IgA subclasses was as follows: IgG1

73.3% (22/30), IgG2 10% (3/30), IgG4 16.7% (5/30), IgA1 92.3% (12/13) and IgA2 7.6% (1/13). None of the IgG paraproteins belonged to IgG3 subclass.

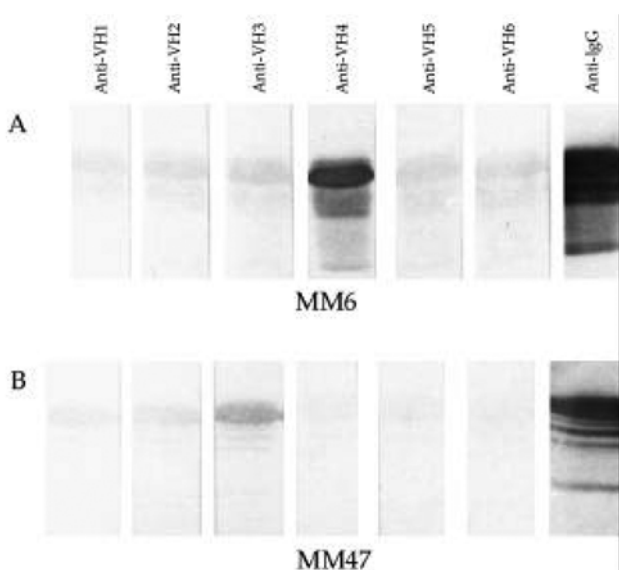
### Distribution of V<sub>H</sub> gene family

V<sub>H</sub> gene families were identified by Western blotting. *Figure 2* illustrates the immunoblotting profile of two paraproteins. The results of the V<sub>H</sub> expression are summarized in *Table 2*. Of 43 paraproteins tested, 26 (60.5%) belonged to V<sub>H</sub>3 family (39.5% IgG and 20.9% IgA). The frequency of other V<sub>H</sub> families was as follows: 28%, 4.6%, 4.6% and 2.3% for V<sub>H</sub>4, V<sub>H</sub>6, V<sub>H</sub>1 and V<sub>H</sub>5, respectively.

None of the paraproteins reacted with the anti-V<sub>H</sub>2 family specific reagent. Distribution of V<sub>H</sub> gene families within IgG and IgA subclasses is given in *Table 3*. All V<sub>H</sub>6 and V<sub>H</sub>5 gene family expressing IgG paraproteins were from the IgG1 subclass. While the majority of the IgG1 myelomas (63.6%) belonged to V<sub>H</sub>3 family, none were from the V<sub>H</sub>1 family. The V<sub>H</sub>1, V<sub>H</sub>3 and V<sub>H</sub>4 families, were similarly represented within IgG2 and IgG4 subclasses.

### Detection of V<sub>H</sub>-associated CRIs

V<sub>H</sub>-associated CRIs were identified by capture ELISA. Of the paraproteins tested, 7% (3/43) expressed the V<sub>H</sub>3-associated CRI (D12), of which 1/30 and 2/13 were from the IgG and IgA isotypes, respectively (*Table 4*). All the CRI<sup>+</sup> samples belonged to the V<sub>H</sub>3 gene family. The other V<sub>H</sub>-associated CRI identified by G6, G8, Lc1, 9G4 and JE6 MAbs were negative in all the samples tested.



**Figure 2.** Western blot analysis of V<sub>H</sub> expression of two paraproteins.

**Table 2.** Frequency of V<sub>H</sub> subgroups in the panel of paraproteins

Paraprotein	Total	V <sub>H</sub> 1	V <sub>H</sub> 2	V <sub>H</sub> 3	V <sub>H</sub> 4	V <sub>H</sub> 5	V <sub>H</sub> 6
IgG	30	2	0	17	8	1	2
IgA	13	0	0	9	4	0	0
Total	43	2	0	26	12	1	2

**Table 3.** Distribution of V<sub>H</sub> subgroups within different subclasses of myeloma proteins

Paraprotein	Total	V <sub>H</sub> 1	V <sub>H</sub> 2	V <sub>H</sub> 3	V <sub>H</sub> 4	V <sub>H</sub> 5	V <sub>H</sub> 6
IgG1	22	0	0	14	5	1	2
IgG2	3	1	0	1	1	0	0
IgG4	5	1	0	2	2	0	0
IgA1	12	0	0	9	3	0	0
IgA2	1	0	0	0	1	0	0

**Table 4. Frequency of V<sub>H</sub>-associated CRIs in MM paraproteins**

Paraprotein	V <sub>H</sub> -CRI					
	G6	G8	D12	Lc1	9G4	JE6
IgG	0	0	1/30	0	0	0
IgA	0	0	2/13	0	0	0
Total	0	0	3/43	0	0	0

### Discussion

Biased utilization of Ig V<sub>H</sub> and/or V<sub>L</sub> genes has been reported in a variety of B-cell malignancies, including acute lymphoblastic leukemia (ALL),<sup>22</sup> chronic lymphocytic leukemia (CLL),<sup>15,23</sup> prolymphocytic leukemia (PLL),<sup>24</sup> Burkitt's lymphoma (BL),<sup>25,26</sup> lymphoproliferation associated with autoimmune Sjogren's syndrome,<sup>20</sup> and diffuse large cell lymphoma (DLCL).<sup>27</sup> These malignancies represent B-cell precursors arrested at different stages of the differentiation pathway, from the early pre-B cell (ALL) to the activated germinal center derived B-cell stage (BL and DLCL).

The clonal origin of the neoplastic cells in MM is derived from the most terminally differentiated B-lymphocytes, i.e. the plasma cells. At this stage of development, the cells are no longer selectable by antigen and are committed to produce and secrete a large amount of Ig in the bone marrow. This could suggest stochastic rearrangement of V<sub>H</sub> genes similar to that of the mature naïve peripheral blood lymphocytes. This issue however, has not been extensively studied in MM, with limited inconclusive data being reported in very small cohorts of patients.<sup>9-13</sup> There has been only one extensive investigation on the use of V<sub>H</sub> genes in a large cohort of MM patients which has recently been reported by Rettig et al.<sup>28</sup> This limitation seems to be largely due to limited access to bone marrow samples required for extraction of RNA/DNA from the malignant plasma cells which do not circulate in peripheral blood. One simple way of assessment of the frequency of V<sub>H</sub> and/or V<sub>L</sub> gene expression in MM is the use of polyclonal and monoclonal anti-subgroup and anti-CRI antibodies.

In the present study a comprehensive panel of V<sub>H</sub>-associated monoclonal anti-CRI antibodies which have already been extensively characterized together with polyclonal anti-V<sub>H</sub> antibodies, were employed for the first time to characterize paraproteins isolated from 43 Iranian patients.

Our results regarding the frequency of V<sub>H</sub> gene use show a predominance of the V<sub>H</sub>3 and V<sub>H</sub>4 gene families. The over-representation of these two families seems to correspond to the total number of functional germline genes within the V<sub>H</sub>3 and V<sub>H</sub>4 families (Table 5), though the figures are slightly higher in our MM samples, accounting for 60.5% and 28% of the total V<sub>H</sub>, respectively. However,

complete lack of V<sub>H</sub>2 family and particularly substantially decreased expression frequency of the V<sub>H</sub>1 family (4.6% vs 21.5%), together with slightly higher frequency of the V<sub>H</sub>6 gene products (4.6% vs 2%), suggest non-random usage of these V<sub>H</sub> families in our MM samples. This is more evident in the IgA paraproteins where only V<sub>H</sub>3 and V<sub>H</sub>4 genes were selectively expressed with complete absence of the other gene families (Table 2).

The results of V<sub>H</sub>1, V<sub>H</sub>2 and V<sub>H</sub>6 gene family distribution, do not comply with previous data reported by Rettig and colleagues,<sup>28</sup> who have demonstrated random expression of all the V<sub>H</sub> families in 72 MM patients by RT-PCR and nucleotide sequencing.

The difference in the frequency of V<sub>H</sub> family usage is more signified when analyzed in association with the IgG subclass profiles. Although the sample size is too small to allow firm conclusions, absence of V<sub>H</sub>1 within 22 IgG1 paraproteins and expression of this V<sub>H</sub> family in 2 out of 8 (25%) IgG2 and IgG4 subclasses (P=0.06) (Table 3), implies non-random distribution of V<sub>H</sub>1 family in a subset of MM. A large cohort of MM paraproteins with a variety of heavy chain isotypes and subclasses needs to be studied to confirm and extend our observation.

Lack of expression of the CRI linked to V<sub>H</sub>1 (G6 and G8), V<sub>H</sub>4 (9G4 and Lc1) and V<sub>H</sub>6 (JE6) and low expression frequency of the V<sub>H</sub>3-associated CRI (D12) in our samples (Table 4) may imply accumulation of somatic hypermutations within the V<sub>H</sub> genes. Although extensive mutations have been reported in all V<sub>H</sub> sequences isolated from MM patients,<sup>9-13,28</sup> the results obtained for each idiotope should be treated and interpreted separately, to avoid oversimplification. A rough estimate of the expression frequency of the gene(s) coding for the probed CRI in normal peripheral blood, normal bone marrow plasma cells and malignant plasma cells is essential to make precise correlations between CRI expression and somatic mutation. Recent

**Table 5. Comparative frequency of V<sub>H</sub> gene family usage in 43 Iranian MM patients**

V <sub>H</sub> family	Germline genes <sup>1</sup>	Functional germline genes <sup>2</sup>	Frequency of V <sub>H</sub> -germlines in MM patients
1	17 (17.9%)	11 (21.5%)	2 (4.6%)
2	4 (4.2%)	3 (5.9%)	0
3	51 (53.7%)	22 (43.1%)	26 (60.5%)
4	13 (13.7%)	11 (21.5%)	12 (28%)
5	3 (3.2%)	2 (3.9%)	1 (2.3%)
6	1 (1%)	1 (2%)	2 (4.6%)
7	1 (1%)	1 (2%)	-
Total	95 (100%)	51 (100%)	43 (100%)

<sup>1,2</sup>The frequency of V<sub>H</sub> germline genes and functional germline genes has been adapted from refs. 29 and 30, respectively.

investigations have clearly demonstrated that expression of the functional V<sub>H</sub> genes in human adult and fetal life is not random and some members of each V<sub>H</sub> family rearrange more frequently than others and some have not been found in any functional rearrangements sequenced to date.<sup>29,31-33</sup>

Taking these considerations into account, our results concerning lack of expression of the V<sub>H</sub>4-associated CRI identified by MAb 9G4 may not be easily attributed to somatic mutation. This CRI is encoded by a single gene (V<sub>H</sub> 4.34) from the V<sub>H</sub>4 family.<sup>34</sup> The idiotope has been localized to the first framework region (FR1) of the variable region and therefore is expressed on germline encoded and somatically mutated proteins.<sup>35</sup> Almost all V<sub>H</sub> proteins encoded by the V<sub>H</sub>4.34 gene have so far been found to express the 9G4 CRI.<sup>36</sup> This gene is expressed at a high frequency in peripheral blood B-cells<sup>31,32</sup> and 3.5–6% of these cells were found to express the CRI.<sup>31</sup> Despite overexpression in a variety of B-cell malignancies,<sup>36</sup> surprisingly this gene was not rearranged in malignant plasma cells from a large number of MM patients.<sup>28</sup> Similar findings have also been reported in normal plasma cells isolated from the lamina propria.<sup>37</sup> Although, no data from the normal bone marrow plasma cells is available, expression of the 9G4 CRI in a minor proportion of normal polyclonal IgM (~0.7%),<sup>31</sup> presents indirect evidence for lower representation of the V<sub>H</sub> 4.34 gene in normal bone marrow-derived plasma cells. Our results, therefore, could be interpreted to imply a negative selection for the V<sub>H</sub> 4.34 gene in the myeloma cells, rather than somatic mutation.

This interpretation may also hold for the lack of expression the other V<sub>H</sub>4-associated CRI identified by MAb Lc1 in Iranian MM patients. As opposed to the 9G4 CRI, the Lc1 idiotope was found to be encoded by multiple members of the V<sub>H</sub>4 family, including V71-2 (V<sub>H</sub>4-61), V71-4 (V<sub>H</sub>4-59), V<sub>H</sub>4.18 and V2-1 (V<sub>H</sub>4-39) and V72-1.<sup>35,38,39</sup> This suggests that Lc1 identifies a sub-sub group of the V<sub>H</sub>4 gene products and should be localized to the FR residues. Subsequent studies have proved this assumption and mapped the idiotope to the FR1.<sup>35</sup> Altogether, these observations argue for negative selection of the genes coding for Lc1 CRI, rather than somatic mutation, though the influence of the latter mechanism should not be totally discounted.

Lack of expression of the V<sub>H</sub>1-associated CRI identified by the MAbs G6 and G8 could also be attributed to decreased rate of rearrangement of the V<sub>H</sub>1 gene family members in our MM samples. Only two of the paraproteins tested (4.6%) belonged to the V<sub>H</sub>1 family (*Table 2*). Considering that this gene family constitutes eleven functional members, of which only one (V<sub>H</sub>1-69 or 51p1) seems to encode the G6 CRI,<sup>23</sup> inability to detect this CRI can not, therefore, be simply taken to indicate contribution of somatic mutation. This argument also applies to the G8 CRI which is more represented in normal B-cells and polyclonal IgM than G6 CRI.<sup>40, 41</sup> As for the Lc1 CRI, this

idiotope is thought to be encoded by more than one member of the V<sub>H</sub>1 gene family, yet to be identified. Our findings regarding the V<sub>H</sub>1-CRI suggest that selection of the genes coding for these CRI is differentially regulated in CD5<sup>+</sup> B-cell malignancies such as B-CLL, where these genes are overexpressed<sup>15</sup> as compared with MM.

Contribution of somatic mutation within our MM samples could be envisaged by the lack of expression of the V<sub>H</sub>6-associated CRI recognized by the MAb JE6. The V<sub>H</sub>6 family contains a single functional gene (V<sub>H</sub>6-1) located adjacent to the D gene cluster.<sup>29</sup> Germline encoded, but not somatically mutated products of this gene are identified by the MAb JE6.<sup>18</sup> This allows the use of this antibody to serologically differentiate between germline encoded and somatically mutated V<sub>H</sub>6 gene products. Since two (4.6%) of our MM paraproteins were from the V<sub>H</sub>6 family and none were found to express this idiotope, this could imply involvement of somatic mutation in these samples. Interestingly, the only V<sub>H</sub>6 gene so far reported to be rearranged in MM, was found to be extensively mutated with a maximum of 89% homology to the germline counterpart.<sup>28</sup>

Finally, the pattern of expression of the V<sub>H</sub>3-associated CRI identified by MAb D12 may also imply, to a lesser extent, the influence of somatic mutation. Three of our samples (1 IgG and 2 IgA) (7%) expressed the D12 CRI (*Table 4*). However, this idiotope is expressed on 14–18% of both normal B-cells and polyclonal immunoglobulin,<sup>40,41</sup> suggesting involvement of multiple members of the V<sub>H</sub>3 gene family in its expression. At least 5 distinct gene segments from the V<sub>H</sub>3 family have been demonstrated to express the D12 CRI. Interestingly, the idiotope was recently mapped to the external face of the heavy chain involving FR1, FR3 and CDR2. A single amino acid mutation at position 57 could result in complete loss of the idiotope.<sup>42</sup>

In summary, our findings suggest non-random distribution of some V<sub>H</sub> gene families and V<sub>H</sub>-associated CRI in Iranian MM patients, which could partly be attributed to either negative selection or somatic mutation.

### Acknowledgements

The authors wish to thank Mr J. Khoshnoodi from School of Public Health, for his technical help and Dr. A. Bybordi from Shariati Hospital, Tehran University of Medical Sciences, for providing some serum samples. Thanks are also due to Dr. G.J. Silverman from University of California, USA for generous supply of anti-subgroup antibodies, Dr. J.H. Van Es from University Hospital Utrecht, The Netherlands, Professor R. Jefferis and Dr. M. Goodall from Birmingham University, UK for providing anti-CRI antibodies.

### References

- <sup>1,2</sup>Nishimoto N, Suematsu S, Kishimoto T: Plasma cell dyscrasias. *Adv Immunol.*, 64:218-281, 1997.
- <sup>2,3</sup>Liu P, Leong T, Quam L, et al: Activating mutations of N- and K-ras in multiple myeloma show different clinical associations. Analysis of the Eastern Cooperative Oncology Group phase III trial. *Blood* 88:2699-2706, 1996.

- 3.<sup>2</sup>Dao DD, Sawyer JR, Epstein J, et al: Detection of retinoblastoma gene in multiple myeloma. *Leukemia* 8:1280-1284, 1994.
- 4.<sup>2</sup>Harada H, Kawano MM, Huang N, et al: Phenotypic difference of normal plasma cells from mature myeloma cells. *Blood* 81:2658-2663, 1993.
- 5.<sup>2</sup>Mahmoud MS, Huang N, Nobuyoshi M, et al: Altered expression of pax-5 gene in human myeloma. *Blood* 4311-4315, 1996.
- 6.<sup>2</sup>Juliusson G, Gahrton G: Chromosome abnormalities in multiple myeloma. In: *Multiple Myeloma* (G. Gahrton and B. Durie, Eds.), Oxford University Press, Oxford, pp: 55-63, 1996.
- 7.<sup>2</sup>Bergsagel PL, Nardini E, Brents L, et al: IgH translocations in multiple myeloma: a nearly universal event that rarely involves c-myc. *Curr Top Microbiol Immunol* 224:283-287, 1997.
- 8.<sup>2</sup>Nishida K, Tamura A, Nakazawa N, et al: The Ig heavy chain gene is frequently involved in chromosomal translocations in multiple myeloma and plasma cell leukemia as detected by in situ hybridization. *Blood* 90:526-534, 1997.
- 9.<sup>2</sup>Bakkus MHC, Heirman C, Van Riet I, et al: Evidence that multiple myeloma Ig heavy VDJ genes contain somatic mutations but show no intraclonal variation. *Blood* 8:2326-2335, 1992.
- 10.<sup>2</sup>Sahota S, Hamblin T, Oscier DG, et al: Assessment of the role of clonogenic B lymphocytes in the pathogenesis of multiple myeloma. *Leukemia* 8:1285-1289, 1994.
- 11.<sup>2</sup>Vesico RA, Cao Hong CH, Lee JC, et al: The heavy chain variable region in multiple myeloma shows evidence of prior somatic mutation and antigen selection but the lack of intraclonal diversity or clonal progression. *J Immunol* 155:2487-2497, 1995.
- 12.<sup>2</sup>Cogne M, Guglielme P: Exon skipping without splice site mutation accounting for abnormal Ig chains in nonsecretory human myeloma. *Eur J Immunol* 23:1289-1293, 1993.
- 13.<sup>2</sup>Sahota S, Leo R, Hamblin TJ, et al: Myeloma V<sub>L</sub> and V<sub>H</sub> gene sequences reveal a complementary imprint of antigen selection in tumor cells. *Blood* 89:219-226, 1997.
- 14.<sup>2</sup>Silverman GJ, Goldfein RD, Chen PP, et al: Idiotypic and subgroup analysis of human rheumatoid factors: implications for structural and genetic basis of autoantibodies in humans. *J Clin Invest* 82:469-475, 1987.
- 15.<sup>2</sup>Shokri F, Mageed RA, Richardson P, et al: Modulation and high frequency expression of autoantibody associated cross-reactive idiotypes linked to the V<sub>H</sub>1 subgroup in CD5 expressing B lymphocytes from patients with chronic lymphocytic leukemia. *Scand J Immunol* 37:673-679, 1993.
- 16.<sup>2</sup>Ono M, Winearls CG, Amus N, et al: Monoclonal antibodies to restricted and cross-reactive idiotypes on monoclonal RF and their recognition of idiotype-positive cells. *Eur J Immunol* 17:343-349, 1987.
- 17.<sup>2</sup>Stevenson FK, Smith GJ, North J, et al: Identification of normal B-cells counterparts of neoplastic cells which secrete cold agglutinins of anti-I and anti-i specificity. *Br J Hematol* 72:9-15, 1989.
- 18.<sup>2</sup>Van Es JH, Raaphorst FM, Vantol MJD, et al: Expression pattern of the most J<sub>H</sub> proximal human V<sub>H</sub> gene segment (V<sub>H</sub>6) in the B cell and antibody repertoire suggests a role of V<sub>H</sub>6-encoded IgM antibodies in early ontogeny. *J Immunol* 150:1-8, 1993.
- 19.<sup>2</sup>Brouet JC, Fermand JP: Multiple myeloma. In: *Samters Immunologic Disease* (M.M. Frank, K.F. Austen, H.N. Claman, E.R. Unanue, Eds.) New York: Little Brown, pp: 623-636, 1995.
- 20.<sup>2</sup>Shokri F, Mageed RA, Maziak BR, et al: Lymphoproliferation in primary Sjogren's syndrome: Evidence of selective expansion of a B cell subset characterized by the expansion of cross-reactive idiotypes. *Arth Rheum* 36:1128-1136, 1993.
- 21.<sup>2</sup>Shokri F, Mageed RA, Jeffers R: A quantitative ELISA for measurement of RF-associated CRI in serum from patients with rheumatic disease. *Br J Rheumatol* 32:862-869, 1993.
- 22.<sup>2</sup>Deane M, Baker BVY, Norton JD: Immunoglobulin V<sub>H</sub>4 gene usage in B lymphoid leukemias. *Br J Hematol* 84:242-249, 1993.
- 23.<sup>2</sup>Kipps TJ, Tomhave E, Pratt LF, et al: Developmentary restricted Ig heavy chain variable region gene expressed at high frequency in chronic lymphocytic leukemia. *Proc Natl Acad Sci USA* 86:5913-5917, 1989.
- 24.<sup>2</sup>Shokri F, Mageed RA, Richardson P, et al: Idiotypic and immunophenotypic characterization of the leukemic B-cells from patients with prolymphocytic leukemia: evidence for a selective expression of immunoglobulin variable region (IgV) gene products. *Leuk Res* 17:669-676, 1993.
- 25.<sup>2</sup>Moazzeni SM, Mosayyebi G, Stevenson FK, et al: Biased utilization of immunoglobulin variable region heavy and light chain genes by the malignant CD5- B-cells from patients with Burkitt's lymphoma. *Int J Cancer* 58:226-232, 1994.
- 26.<sup>2</sup>Chapman CJ, Zhou JX, Gregory C, et al: V<sub>H</sub> and V<sub>L</sub> gene analysis in sporadic Burkitt's lymphoma shows hypermutation intraclonal heterogeneity, and a role for antigen selection. *Blood* 88:3562-3568, 1996.
- 27.<sup>2</sup>Hsu FJ, Levy R: Preferential use of the V<sub>H</sub>4 Ig gene family by the diffuse large cell lymphoma. *Blood* 86:3072-3082, 1995.
- 28.<sup>2</sup>Rettig MB, Vesico RA, Cao J, et al: V<sub>H</sub> gene usage in multiple myeloma: Complete absence of the V<sub>H</sub>4.21 (V<sub>H</sub>4-34) gene. *Blood* 87:2846-2852, 1996.
- 29.<sup>2</sup>Cook GP, Tomlinson IM: The human Ig V<sub>H</sub> repertoire. *Immunol Today* 16:237-242, 1995.
- 30.<sup>2</sup>Vargaz-Madrado E, Lara-Ochoa F, Ramirez-Benites MC: Evolution of the structural repertoire of the human V<sub>H</sub> and V<sub>K</sub> germline genes. *Int Immunol* 9:1801-1815, 1997.
- 31.<sup>2</sup>Kraj P, Friedman DF, Stevenson FK, et al: Evidence for the over-expression of the V<sub>H</sub>4-31 (V<sub>H</sub>4.21) Ig gene segment in the normal adult B cell repertoire. *J Immunol* 154:6406-6420, 1995.
- 32.<sup>2</sup>Brezinschek HP, Brezinschek RI, Lipsky PE: Analysis of the heavy chain repertoire of human peripheral B cells using single cell PCR. *J Immunol* 155:190-202, 1995.
- 33.<sup>2</sup>Schroeder HW, Wang JY: Preferential utilization of conserved Ig heavy chain variable gene segments during human fetal life. *Proc Natl Acad Sci USA* 87:6146-6150, 1990.
- 34.<sup>2</sup>Pasqual V, Victor K, Lelsz D, et al: Nucleotide sequence analysis of the V-regions of two IgM cold agglutinins: evidence that the V<sub>H</sub>4.21 gene segment is responsible for the major cross-reactive idiotypes. *J Immunol* 146:4385-4391, 1991.
- 35.<sup>2</sup>Potter KN, Li YC, Capra JD: The cross-reactive idiotopes recognized by the monoclonal antibodies 9G4 and Lc1 are located in framework region 1 of two non-overlapping subsets of human V<sub>H</sub>4 family encoded antibodies. *Scand J Immunol* 40:43-49, 1994.
- 36.<sup>2</sup>Stevenson FK, Spellerberg MB, Chapman CJ, et al: Differential usage of an autoantibody-associated V<sub>H</sub> gene, V<sub>H</sub>4-21, by human B-cell tumors. *Leuk Lymph* 16:379-384, 1995.
- 37.<sup>2</sup>Fischer M, Kuppers R: Human IgA- and IgM-secreting intestinal plasma cells carry heavily mutated V<sub>H</sub> region genes. *Eur J Immunol* 28:2971-2977, 1998.
- 38.<sup>2</sup>Pratt LF, Szubin R, Carson DA, et al: Molecular characterization of a supratypic cross-reactive idiotype associated with IgM autoantibodies. *J Immunol* 147:2041-2046, 1991.
- 39.<sup>2</sup>Deane M, Mackenzie LE, Stevenson FK, et al: The genetic basis of human V<sub>H</sub>4 gene family-associated CRI expression in CD5<sup>+</sup> and CD5<sup>-</sup> cord blood B-lymphocyte clones. *Scand J Immunol* 38:348-358, 1993.
- 40.<sup>2</sup>Shokri F, Mageed RA, Tunn E, et al: Qualitative and quantitative expression of V<sub>H</sub>1-associated cross-reactive idiotypes within IgMRF from patients with early synovitis. *Ann Rheum Dis* 49:150-154, 1990.
- 41.<sup>2</sup>Shokri F, Mageed RA, Maziak BR, et al: Expression of V<sub>H</sub>III-associated cross-reactive idiotypes on human B-lymphocytes: Association with staphylococcal protein A (SPA) binding and Staphylococcus aureus Cowan I (SAC) stimulation. *J Immunol* 146:936-940, 1991.
- 42.<sup>2</sup>Potter KN, Li Y, Mageed RA, et al: Anti-idiotypic antibody D12 and superantigen SPA both interact with human V<sub>H</sub>3-encoded antibodies on the external face of the heavy chain involving FR1, CDR2 and FR3. *Molec Immunol* 35:1179-1187, 1998.