


Familial Acute Myeloid Leukemia and Myelodysplasia in Hungary

Attila Péter Király¹ · Krisztián Kállay² · Ambrus Gángó¹ · Ádám Kellner³ ·
Miklós Egyed³ · Anita Szőke⁴ · Richárd Kiss¹ · István Vályi-Nagy⁵ · Judit Csomor¹ ·
András Matolcsy¹ · Csaba Bődör¹ 

Received: 7 March 2017 / Accepted: 20 March 2017 / Published online: 29 March 2017
© Arányi Lajos Foundation 2017

Abstract Although genetic predisposition to haematological malignancies has long been known, genetic testing is not yet the part of the routine diagnostics. In the last ten years, next generation sequencing based studies identified novel germline mutations in the background of familial aggregation of certain haematologic disorders including myelodysplastic syndromes (MDS) and acute myeloid leukaemia (AML). This is supported by the fact that the myeloid neoplasms with genetic predisposition represent a new category in the revised 2016 World Health Organization classification. According to the new classification, these disorders are subdivided based on the clinical and genetic features, including myeloid neoplasms with germline predisposition alone, or with pre-existing platelet disorder, cytopenias or other organ failures. The predisposing genetic factors include mutations in the *RUNX1*, *CEBPA*, *GATA2*, *ANKRD26*, *ETV6*, *DDX41*, *TERC* or *TERT* and *SRP72* genes. The genes affected in these syndromes are

important regulators of haemopoiesis and are frequently implicated in leukaemogenesis, providing deeper insight into the understanding of normal and malignant haemopoiesis. Despite the growing knowledge of germline predisposing events in the background of familial myeloid malignancies, the germline genetic component is still unknown in a subset of these pedigrees. Here, we present the first study of inherited myeloid malignancies in Hungary. We identified three families with apparent clustering of myeloid malignancies with nine affected individuals across these pedigrees. All tested individuals were negative for *CEBPA*, *GATA2*, *RUNX1*, *ANKRD26*, *ETV6*, *DDX41*, *TERC* or *TERT* and *SRP72* mutations, suggesting the presence of so far unidentified predisposing mutations.

Keywords Familial MDS/AML · Genetic predisposition · Germline mutation

Electronic supplementary material The online version of this article (doi:10.1007/s12253-017-0216-4) contains supplementary material, which is available to authorized users.

✉ Csaba Bődör
bodor.csaba1@med.semmelweis-univ.hu

¹ MTA-SE Lendület Molecular Oncohematology Research Group, 1st Department of Pathology and Experimental Cancer Research, Semmelweis University, Budapest, Hungary

² Pediatric Hematology and Stem Cell Transplantation Unit, United St. István and St. László Hospital, Budapest, Hungary

³ Department of Hematology, Kaposi Mor Teaching Hospital, Kaposvár, Hungary

⁴ 2nd Department of Medicine and Cardiology Centre, Medical Faculty, Albert Szent-Györgyi Clinical Centre, University of Szeged, Szeged, Hungary

⁵ United St. István and St. László Hospital, Budapest, Hungary

Introduction

Myelodysplastic syndromes (MDS) and acute myeloid leukaemias (AML) are generally considered sporadic diseases, however the importance of familial forms of these malignancies is being increasingly recognized [1] [2]. This has largely been facilitated by the recent next generation sequencing (NGS) based studies leading to identification of novel germline mutations predisposing to familial MDS/AML [3–6]. These familial cases are considered to be a rarity, but they are likely to be more common than currently appreciated. This is supported by the fact that familial MDS/AML represents a new category in the recently revised 2016 WHO classification of myeloid neoplasms and acute leukemia [7].

Familial MDS/AML cases often present in childhood and are commonly associated with peculiar clinical symptoms and syndromes. These syndromes are heterogeneous with regards

to their clinical presentation as well as the underlying causative genetic mutations, and need distinguished management with respect of the bone marrow donor selection as well as the monitoring of the affected individuals [8, 9]. The currently recognized familial leukaemia predisposition syndromes are classified according to the clinical symptoms and predisposing germline mutations [7]. AML or MDS caused by *CEBPA* or *DDX41* mutation occurs alone without other clinical symptoms or antecedent haematological condition [6, 10–13]. Familial MDS caused by *GATA2* mutations often occurs in the setting of cytopenias, and rare immunological syndromes [3, 14, 15]. Mutations of *TERT* or *TERC* and *SRP72* manifested clinically in bone marrow failure syndromes associated with elevated risk of MDS/AML [4, 16]. Although the first symptom could be haematological malignancy in younger age, platelet dysfunction and variable bleeding disorders associated with elevated risk of MDS/AML are the most frequent clinical phenomena associated with the germline mutation of *RUNX1*, *ANKRD26* or *ETV6* in the background [5, 17, 18].

It is interesting to note that in some of the well-known clinical syndromes the germ-line predisposing event is not sufficient for the full blown malignant phenotype but secondary genetic events are necessary for manifestation of the overt malignancy [19–21]. Consequently, the recognition of the familial MDS/AML cases is hampered by the variable clinical presentation, incomplete penetrance and variable age of onset [22]. Although the spectrum of predisposing germline mutations is wide and the number of novel susceptibility alleles demonstrated a rapid increase in the last few years (Fig. 1), the germline mutations identified to date explain only approximately 40–50% of the cases with inherited predisposition to myeloid malignancies, suggesting the existence of additional putative culprit genes [23]. Recognition of these families with genetic predisposition to MDS/AML is of critical importance, as they require distinct management and monitoring with respect to the bone marrow transplantation and the follow up strategy of the family members [9].

Here, we present our findings on the first collected Hungarian familial leukaemia cohort with three families with apparent clustering of myeloid malignancies with nine affected individuals across these pedigrees.

Materials & Methods

We identified three families with aggregation of myeloid malignancies with nine affected individuals within these pedigrees. Bone marrow or peripheral blood samples were collected from the affected members of these families. DNA isolation was performed with High Pure PCR Template Preparation Kit (Roche, Basel, Switzerland) as recommended by the manufacturer. DNAs were tested for mutations in all currently known predisposition genes, including the full coding

sequences of *CEBPA*, *GATA2*, *RUNX1*, *DDX41*, *TERT* and *TERC*, and for mutation hot-spots of *SRP62* (exons 6 and 10) and *ANKRD26* (5'-UTR region) genes. The sequence of the oligonucleotides used for polymerase chain reaction (PCR) amplification and direct Sanger sequencing is detailed in Supplementary Table 1. PCR amplification was performed using the AmpliTaq Gold® DNA Polymerase (Thermo Fisher Scientific, Waltham, Massachusetts, USA), followed by digestion with ExoSAP-IT (Affymetrix, Santa Clara, California, USA). For bidirectional Sanger sequencing we used the BigDye® Terminator v3.1 Cycle Sequencing chemistry (Thermo Fisher Scientific, Waltham, Massachusetts, USA) followed by the analysis of the terminated fragments on a 3500 Genetic Analyser (Thermo Fisher Scientific, Waltham, Massachusetts, USA).

Results

Pedigree A

Three young individuals between age of 12 and 20 were diagnosed with MDS in family A (Fig. 2.). The proband, II-1, presented at age of 18 with three lineage cytopenia and constant need of haemosupportation. The diagnostic laboratory evaluation referred severe pancytopenia, her initial white blood cell (WBC) count was 2.4 G/L, haemoglobin (Hgb) level was 90 g/L and platelet count (Plt) was 27 G/L. The bone marrow biopsy demonstrated hypocellular MDS, megaloblastic erythropoiesis and dysplastic granulopoiesis. No cytogenetic alterations were detected. She underwent treatment with matched unrelated donor (MUD) transplantation. During the recovery, a grade IV intestine graft versus host disease (GVHD) occurred. After the recovery she achieved complete remission and is currently being monitored and followed. The older brother of the proband (II-2) was diagnosed with MDS at age of 20 during the bone marrow donor screening procedure of his sister (proband II-1). However, he didn't suffer from any clinical symptoms and his blood counts were normal (WBC: 5.11 G/L, Hgb: 132 g/L, Plt: 154 G/L) his screening bone marrow sample appeared to be dysplastic (normocellular haemopoiesis with mild to moderate dysplastic features of all cell lineages). In the following period his sister was transplanted with a matched unrelated donor (MUD) donor, and he is currently under watch and wait strategy. The younger brother of the proband (II-3) was diagnosed with MDS at age of 12. He presented with lymph node enlargement and considering the familial aggregation of haematologic disorders in his family he underwent a full clinical screening panel. His initial blood count was: WBC: 8.59 G/L, Hgb: 133 g/L, Plt: 157 G/L. His bone marrow biopsy showed mild to moderate dysplastic features of megakaryocyte cell line consistent with early dysplastic features. He is currently under watch and wait

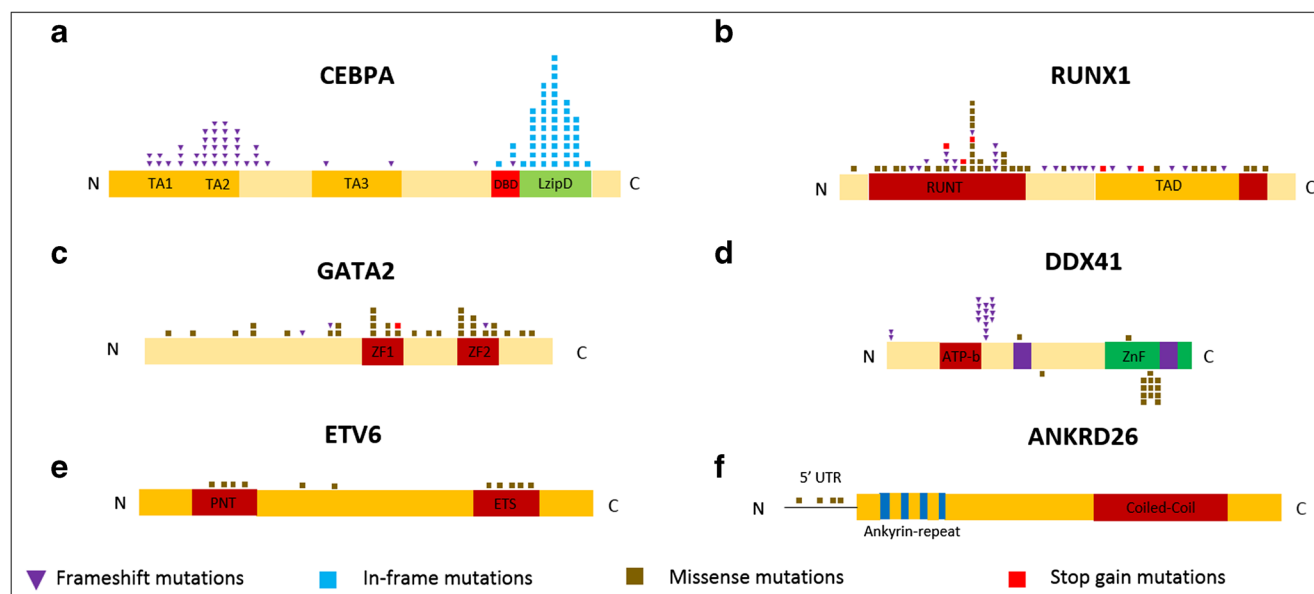


Fig. 1 Illustrated is the schematic protein structure and most frequently mutated regions of the currently known predisposition genes in familial myeloid malignancies: **a** CEBPA, **b** RUNX1, **c** GATA2, **d** DDX41, **e** ETV6 and **f** ANKRD26

strategy. All three individuals were tested for *CEBPA*, *GATA2*, *RUNX1*, *ANKRD26*, *ETV6*, *DDX41*, *TERC* or *TERT* and *SRP72* mutations and were found to be negative for these mutation targets.

Pedigree B

The diagnosis of MDS in the two young affected siblings of pedigree B (Fig. 3) was established simultaneously. The first proband (II-1) presented with moderate bleeding disorder and

thrombocytopenia at age of 14. His initial blood counts showed marked thrombocytopenia, mild anaemia and low WBC count (WBC: 3.63 G/L, Hgb: 108 g/L, Plt: 93 G/L). Bone marrow aspirate and biopsy showed near total aplasia with erythropoietic remnant islets. Together with the latter biopsies, the microscopic picture was consistent with paediatric myelodysplastic syndrome. He is currently under strict clinical and laboratory monitoring. The second proband (II-2), the younger sister of II-1, also presented at the same time with bleeding symptoms and thrombocytopenia at age of 10. Her initial laboratory parameters were as follows: WBC

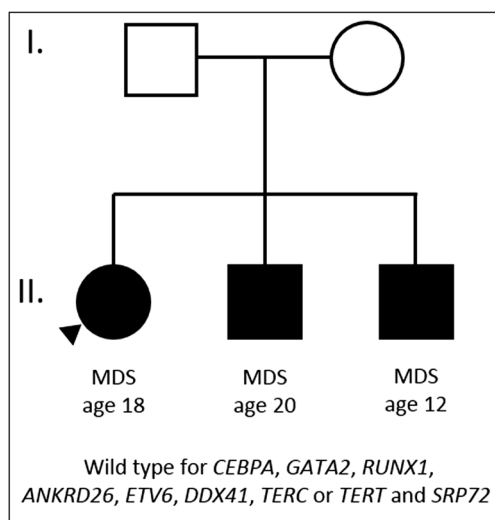


Fig. 2 Pedigree with three siblings diagnosed with MDS: Square denotes males and circle denotes females. Black boxes indicate affected individuals with MDS. The black arrow indicates the proband of the family. All three individuals were tested for *CEBPA*, *GATA2*, *RUNX1*, *ANKRD26*, *ETV6*, *DDX41*, *TERC* or *TERT* and *SRP72* mutations and were found to be negative for these mutation targets

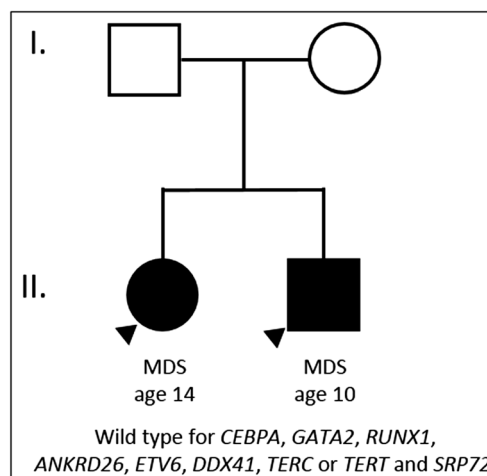


Fig. 3 Pedigree with two siblings affected with MDS. Square denotes males and circle denotes females. Black boxes indicates affected persons with MDS. Arrows indicates the probands of the family. We obtained DNA samples of all the individuals of the family and found no mutations in the analysed regions of the *CEBPA*, *GATA2*, *RUNX1*, *ANKRD26*, *ETV6*, *DDX41*, *TERC* or *TERT* and *SRP72* genes

2.76 G/L; Hgb 111 g/L; Plt 55 G/L. Bone marrow aspirate and biopsy were consistent with paediatric myelodysplastic syndrome of childhood. She is also being closely monitored. Both affected siblings were tested for *CEBPA*, *GATA2*, *RUNX1*, *ANKRD26*, *ETV6*, *DDX41*, *TERC* or *TERT* and *SRP72* mutations and displayed wild type genotypes.

Pedigree C

Four individuals between age of 53 and 82 in family C (Fig. 4) were diagnosed with AML. The proband II-1 was diagnosed with AML at age of 82. The disease represented M6 in the FAB category but harboured no cytogenetic or molecular abnormalities. The older brother of the proband was also diagnosed with AML at age of 53 and the younger sister of the proband also presented with AML at age of 57. The mother of the three affected individuals (I-2) was also diagnosed with AML at age of 64 in 1974. Unfortunately, no medical documentation was available for the latter mentioned member of this family. No germline variants were detected in the DNA obtained from the proband II-1 tested for *CEBPA*, *GATA2*, *RUNX1*, *ANKRD26*, *ETV6*, *DDX41*, *TERC* or *TERT* and *SRP72* mutations.

Discussion

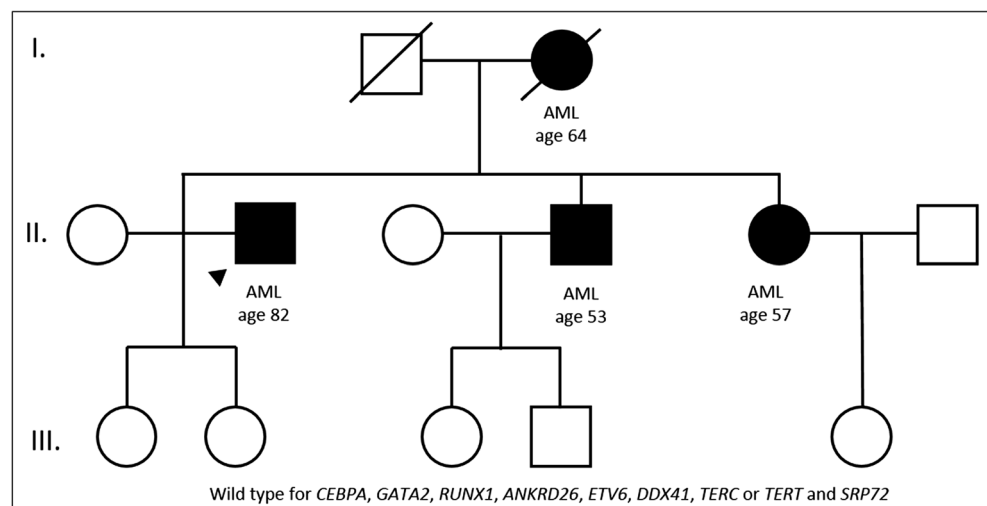
Familial MDS/AML predisposition syndromes are rare inherited disorders characterized by significantly elevated risk of MDS and AML development [2, 7]. *RUNX1* and *CEBPA* represented the first two culprit genes identified as predisposing factors in background of familial platelet disorders with propensity to myeloid malignancy (FPD/AML) and ‘pure’ familial AML, respectively [13, 17]. In the last few years, we witnessed a steep increase in the number of predisposition genes discovered using NGS technologies, including *GATA2* [3, 14, 15],

ANKRD26 [5], *ETV6* [18, 24], *SRP72* [4], *DDX41* [6], *TERC* [25] and *TERT* [26].

Although several disorders with germline predisposition have been included in the revised 2016 WHO classification of myeloid neoplasms and acute leukemia as “myeloid neoplasms with germ line predisposition” [7], screening for the known germline mutations in the background of these syndromes is not part of the routine diagnostic algorithms. However, the most recent European LeukemiaNet(ELN) recommendation on diagnosis and management of AML recommends molecular testing using a gene panel that includes the currently known predisposing alleles if AML with genetic predisposition is suspected [27]. Recognition of the affected families with inherited AML/MDS is of critical importance as they not only provide rare and unique models to study the molecular pathogenesis of these diseases, but identification of an inherited mutation has indeed immediate clinical implications with regards to the management and monitoring of the affected family members [8, 9]. Nevertheless, it is believed that familial MDS/AML is still underdiagnosed and their frequency is considerably higher than currently appreciated.

Recognition of these families is indeed challenging and requires a heightened awareness and high index of suspicion from the clinicians. The diagnosis is complicated by the very variable clinical presentation, variable age of onset, incomplete penetrance and lack of family history. Given that many of these predisposition syndromes have only recently been described, clinical guidelines for screening and management of these families are in their infancy. Churpek and colleagues published the first proposed recommendations [28] recently updated by Churpek and Godley on behalf of the University of Chicago Hematopoietic Malignancies Cancer Risk Team with detailed guidelines on identification, genetic counselling and testing as well as clinical management of inherited myeloid malignancy syndromes [9]. To recognize these syndromes, complete patient and family history must be obtained

Fig. 4 Family with four affected individuals with AML. Square denotes males and circle denotes females. Black boxes indicates affected persons with AML. DNA was available from the proband of the family (II-1). We identified no mutation in the analysed regions of the *CEBPA*, *GATA2*, *RUNX1*, *ANKRD26*, *ETV6*, *DDX41*, *TERC* or *TERT* and *SRP72* genes



including data on previous malignancies and bleeding episodes (in cases with more than one first-degree relative affected with MDS/AML an underlying genetic predisposition should be suspected), as well as the known characteristics of the recognized familial MDS/AML syndromes. Identification of a germline mutation has clinical implications for stem cell transplantation including donor selection and conditioning regimen [8, 9]. It is recommended to screen all close relatives of an affected individuals to avoid transplantation of stem cells from a relative harbouring the same germline predisposition allele [22, 28]. All mutation carriers should also undergo a baseline bone marrow biopsy and a twice a year a complete blood cell count testing [22]. In families where a germline mutation can not be identified, but there is a high suspicion for familial involvement, a matched unrelated donor is preferable [8, 9].

Genes involved in the pathogenesis of familial MDS/AML affect a plethora of cellular processes, including master transcription factors governing haemopoiesis (*RUNX1*, *CEBPA*, *GATA2* and *ETV6*), telomerase regulation (*TERC/TERT*), ribosome assembly and translation (*DDX41*), signal recognition (*SRP72*) with many of them also implicated in sporadic myeloid malignancies [29–32]. Novel candidate genes were identified in single pedigrees, including *DIDO1* and *KMT2C*, however these have not been confirmed yet in additional families [33, 34]. In spite of the rapid progress in the field of familial MDS/AML, mutations in these genes do not explain the genetic basis of all cases with the predisposing gene mutations remaining obscure in subset of these families, including the three pedigrees identified in our study. In pedigrees A and B, we identified five individuals affected with MDS with an early age of onset (10–20 years), while individuals in pedigree C demonstrated a considerably later age of onset (53–82). Standard sequencing assays to screen for the known predisposition alleles were established in Hungary. All individuals tested in these families harboured no mutations in the known predisposition genes, suggesting that the list of causative genes underlying familial myeloid disorders is not complete yet. Inclusion of families with unknown genetic background into genome wide screening studies utilizing whole genome or whole exome sequencing will likely facilitate identification of novel predisposition genes.

Acknowledgements This work was funded by the Momentum grant of the Hungarian Academy of Sciences and NVKP_16-1-2016-0004 and NVKP_16-1-2016-0005 grants of the Hungarian National Research, Development and Innovation Office (NFKIH).

References

- Porter CC (2016) Germ line mutations associated with leukemias. *Hematol Am Soc Hematol Educ Prog* 2016(1):302–308
- West AH, Godley LA, Churpek JE (2014) Familial myelodysplastic syndrome/acute leukemia syndromes: a review and utility for translational investigations. *Ann N Y Acad Sci* 1310:111–118
- Hahn CN, Chong CE, Carmichael CL, Wilkins EJ, Brautigan PJ, Li XC et al (2011) Heritable *GATA2* mutations associated with familial myelodysplastic syndrome and acute myeloid leukemia. *Nat Genet* 43(10):1012–1017
- Kirwan M, Walne AJ, Plagnol V, Velangi M, Ho A, Hossain U et al (2012) Exome sequencing identifies autosomal-dominant *SRP72* mutations associated with familial aplasia and myelodysplasia. *Am J Hum Genet* 90(5):888–892
- Pippucci T, Savoia A, Perrotta S, Pujol-Moix N, Noris P, Castegnaro G et al (2011) Mutations in the 5' UTR of *ANKRD26*, the ankirin repeat domain 26 gene, cause an autosomal-dominant form of inherited thrombocytopenia, *THC2*. *Am J Hum Genet* 88(1):115–120
- Polprasert C, Schulze I, Sekeres MA, Makishima H, Przychodzen B, Hosono N et al (2015) Inherited and somatic defects in *DDX41* in myeloid neoplasms. *Cancer Cell* 27(5):658–670
- Arber DA, Orazi A, Hasserjian R, Thiele J, Borowitz MJ, Le Beau MM et al (2016) The 2016 revision to the World Health Organization classification of myeloid neoplasms and acute leukemia. *Blood* 127(20):2391–2405
- Duployez N, Lejeune S, Renneville A, Preudhomme C (2016) Myelodysplastic syndromes and acute leukemia with genetic predispositions: a new challenge for hematologists. *Expert Rev Hematol* 9(12):1189–1202
- Churpek JE (2016) Godley LA. How I diagnose and manage individuals at risk for inherited myeloid malignancies. *Blood*
- Pabst T, Mueller BU, Zhang P, Radomska HS, Narravula S, Schnittger S et al (2001) Dominant-negative mutations of *CEBPA*, encoding CCAAT/enhancer binding protein- α (C/EBP α), in acute myeloid leukemia. *Nat Genet* 27(3):263–270
- Li R, Sobreira N, Witmer PD, Pratz KW, Braunstein EM (2016) Two novel germline *DDX41* mutations in a family with inherited myelodysplasia/acute myeloid leukemia. *Haematologica* 101(6):e228–e231
- Cardoso SR, Ryan G, Walne AJ, Ellison A, Lowe R, Tummala H et al (2016) Germline heterozygous *DDX41* variants in a subset of familial myelodysplasia and acute myeloid leukemia. *Leukemia* 30(10):2083–2086
- Smith ML, Cavenagh JD, Lister TA, Fitzgibbon J (2004) Mutation of *CEBPA* in familial acute myeloid leukemia. *N Engl J Med* 351(23):2403–2407
- Dickinson RE, Griffin H, Bigley V, Reynard LN, Hussain R, Haniffa M et al (2011) Exome sequencing identifies *GATA-2* mutation as the cause of dendritic cell, monocyte, B and NK lymphoid deficiency. *Blood* 118(10):2656–2658
- Hsu AP, Sampaio EP, Khan J, Calvo KR, Lemieux JE, Patel SY et al (2011) Mutations in *GATA2* are associated with the autosomal dominant and sporadic monocytopenia and mycobacterial infection (MonoMAC) syndrome. *Blood* 118(10):2653–2655
- Armanios M (2009) Syndromes of telomere shortening. *Annu Rev Genomics Hum Genet* 10:45–61
- Song WJ, Sullivan MG, Legare RD, Hutchings S, Tan X, Kufrin D et al (1999) Haploinsufficiency of *CBFA2* causes familial thrombocytopenia with propensity to develop acute myelogenous leukaemia. *Nat Genet* 23(2):166–175
- Zhang MY, Churpek JE, Keel SB, Walsh T, Lee MK, Loeb KR et al (2015) Germline *ETV6* mutations in familial thrombocytopenia and hematologic malignancy. *Nat Genet* 47(2):180–185
- Haslam K, Langabeer SE, Hayat A, Conneally E, Vandenbergh E (2016) Targeted next-generation sequencing of familial platelet disorder with predisposition to acute myeloid leukaemia. *Br J Haematol* 175(1):161–163

20. Preudhomme C, Renneville A, Bourdon V, Philippe N, Roche-Lestienne C, Boissel N et al (2009) High frequency of RUNX1 biallelic alteration in acute myeloid leukemia secondary to familial platelet disorder. *Blood* 113(22):5583–5587
21. Ding LW, Ikezoe T, Tan KT, Mori M, Mayakonda A, Chien W, et al. (2016) Mutational profiling of a MonoMAC syndrome family with GATA2 deficiency. *Leukemia*
22. Godley LA (2014) Inherited predisposition to acute myeloid leukemia. *Semin Hematol* 51(4):306–321
23. DiNardo CD, Bannan SA, Routbort M, Franklin A, Mork M, Armanios M et al (2016) Evaluation of patients and families with concern for predispositions to hematologic malignancies within the hereditary hematologic malignancy clinic (HHMC). *Clin Lymphoma, Myeloma Leuk* 16(7):417–28.e2
24. Noetzli L, Lo RW, Lee-Sherick AB, Callaghan M, Noris P, Savoia A et al (2015) Germline mutations in ETV6 are associated with thrombocytopenia, red cell macrocytosis and predisposition to lymphoblastic leukemia. *Nat Genet* 47(5):535–538
25. Vulliamy T, Marrone A, Dokal I, Mason PJ (2002) Association between aplastic anaemia and mutations in telomerase RNA. *Lancet* 359(9324):2168–2170
26. Yamaguchi H, Calado RT, Ly H, Kajigaya S, Baerlocher GM, Chanock SJ et al (2005) Mutations in TERT, the gene for telomerase reverse transcriptase, in aplastic anemia. *N Engl J Med* 352(14):1413–1424
27. Dohner H, Estey E, Grimwade D, Amadori S, Appelbaum FR, Buchner T et al (2017) Diagnosis and management of AML in adults: 2017 ELN recommendations from an international expert panel. *Blood* 129(4):424–447
28. Churpek JE, Lorenz R, Nedumgottil S, Onel K, Olopade OI, Sorrell A et al (2013) Proposal for the clinical detection and management of patients and their family members with familial myelodysplastic syndrome/acute leukemia predisposition syndromes. *Leuk Lymphoma* 54(1):28–35
29. Green CL, Tawana K, Hills RK, Bodor C, Fitzgibbon J, Inglott S et al (2013) GATA2 mutations in sporadic and familial acute myeloid leukaemia patients with CEBPA mutations. *Br J Haematol* 161(5):701–705
30. Greif PA, Dufour A, Konstandin NP, Ksienzyk B, Zellmeier E, Tizazu B et al (2012) GATA2 zinc finger 1 mutations associated with biallelic CEBPA mutations define a unique genetic entity of acute myeloid leukemia. *Blood* 120(2):395–403
31. Osato M, Yanagida M, Shigesada K, Ito Y (2001) Point mutations of the RUNX1/AML1 gene in sporadic and familial myeloid leukemias. *Int J Hematol* 74(3):245–251
32. Preudhomme C, Sagot C, Boissel N, Cayuela JM, Tigaud I, de Botton S et al (2002) Favorable prognostic significance of CEBPA mutations in patients with de novo acute myeloid leukemia: a study from the acute leukemia French association (ALFA). *Blood* 100(8):2717–2723
33. Galili NT, Trifonov, V., Ewalt, M., Mukherjee, S., Rabadan, R., Raza, A. (2012) Identification of Dido1 Mutation Associated with Familial Myelodysplastic Syndrome (MDS)/Acute Myeloid Leukemia (AML) *Blood*. 120:169
34. Yang F, Gong Q, Shi W, Zou Y, Shi J, Wei F et al (2016) Aberrant DNA methylation of acute myeloid leukemia and colorectal cancer in a Chinese pedigree with a MLL3 germline mutation. *Tumour Biol* 37(9):12609–12618